
ENGLISH

**SUPPORT
ENTITLEMENTS
IN THE UK
NATIONAL
REFERRAL
MECHANISM FOR
VICTIMS OF HUMAN
TRAFFICKING**



Copyright 2016 Focus on Labour Exploitation
All rights reserved
Printed in the United Kingdom
FLEX Charity number 1159611

Illustrations: Kathy MacLeod

This project has been funded with support from the European Commission.

This publication reflects the views only of the author, and the European Commission cannot be held responsible for any use which may be made of the information contained therein.

Focus on Labour Exploitation (FLEX) is a registered charity based in the UK. FLEX works to end trafficking for labour exploitation worldwide. FLEX research and advocacy promotes rights-based responses to human trafficking for labour exploitation centred on prevention.

For more information on our work see our website, www.labourexploitation.org.

SUPPORT ENTITLEMENTS IN THE UK

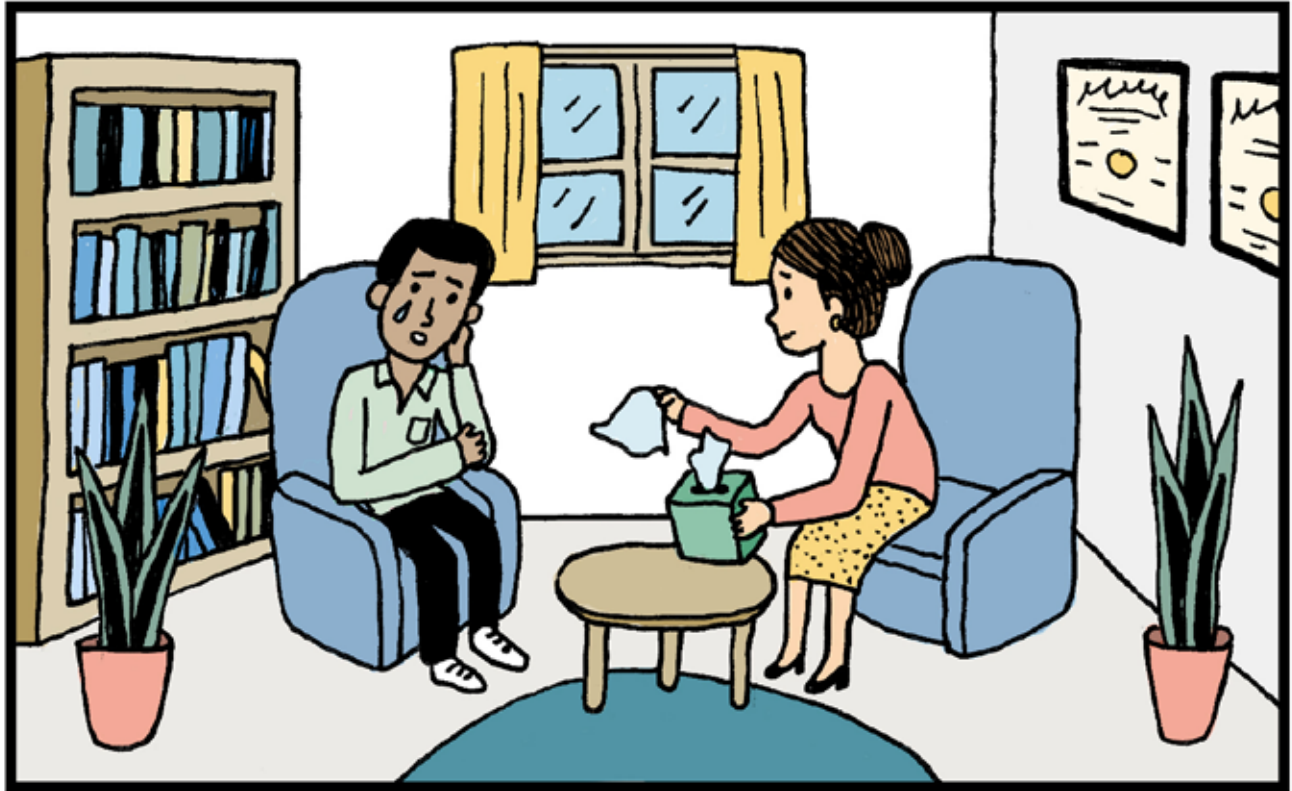
NATIONAL REFERRAL MECHANISM
FOR VICTIMS OF HUMAN TRAFFICKING



Clean and safe accommodation



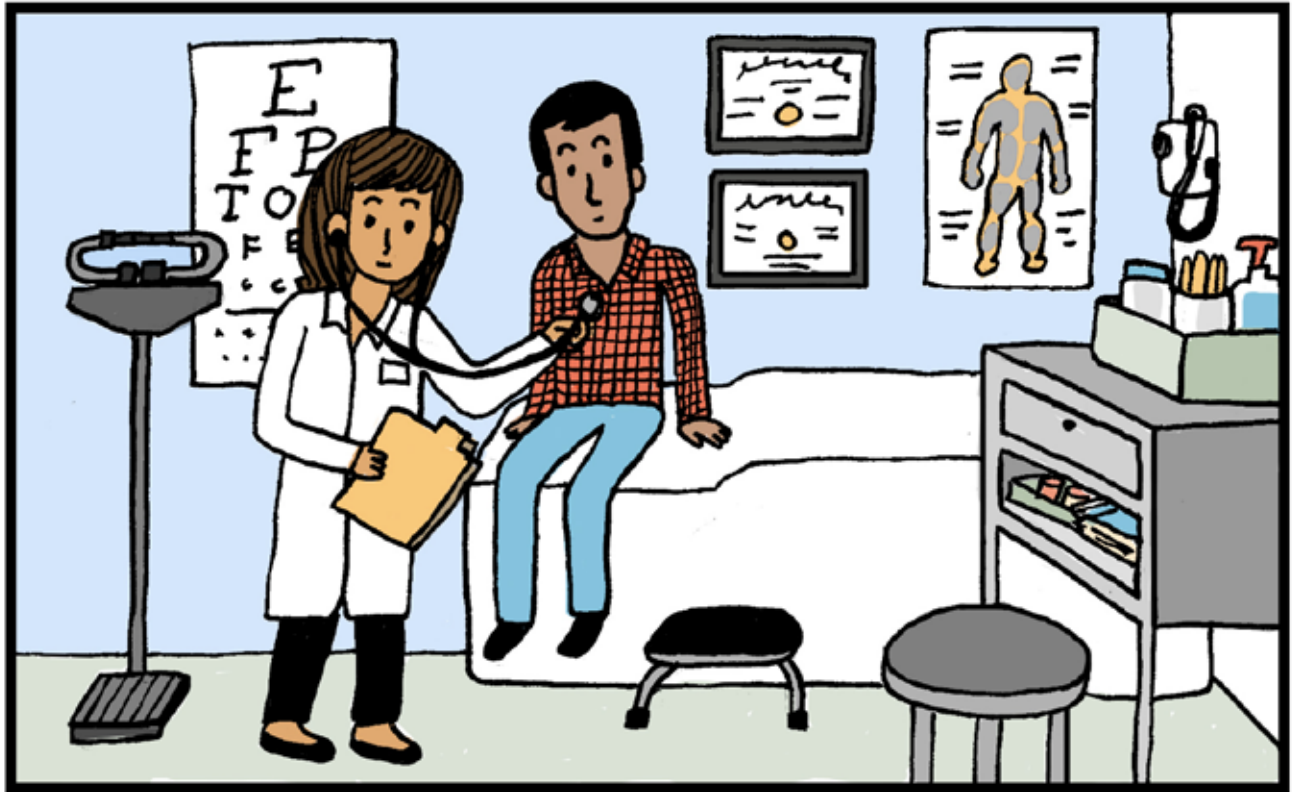
Expert legal advice, including on immigration
and compensation



Psychological or therapeutic counselling

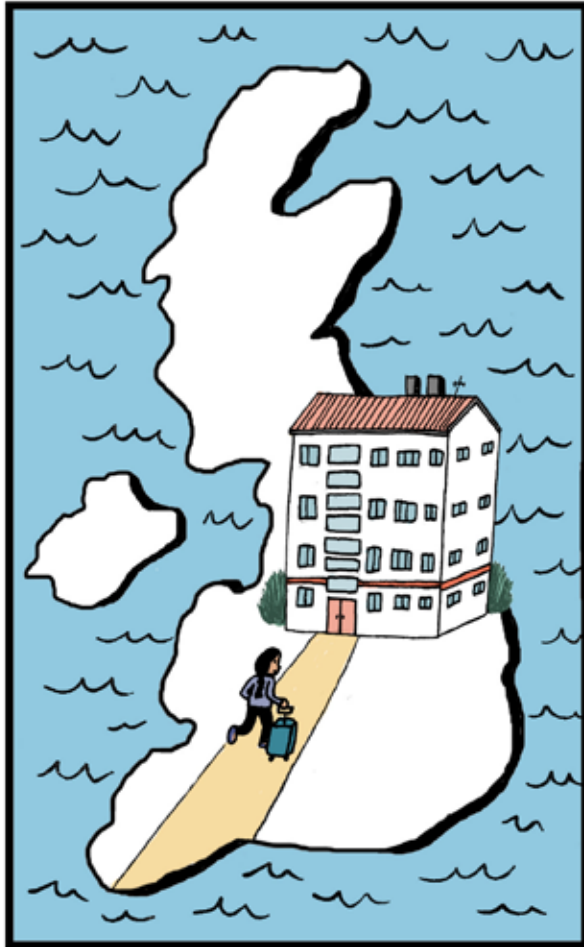


Translation into and from your native language



Medical assistance

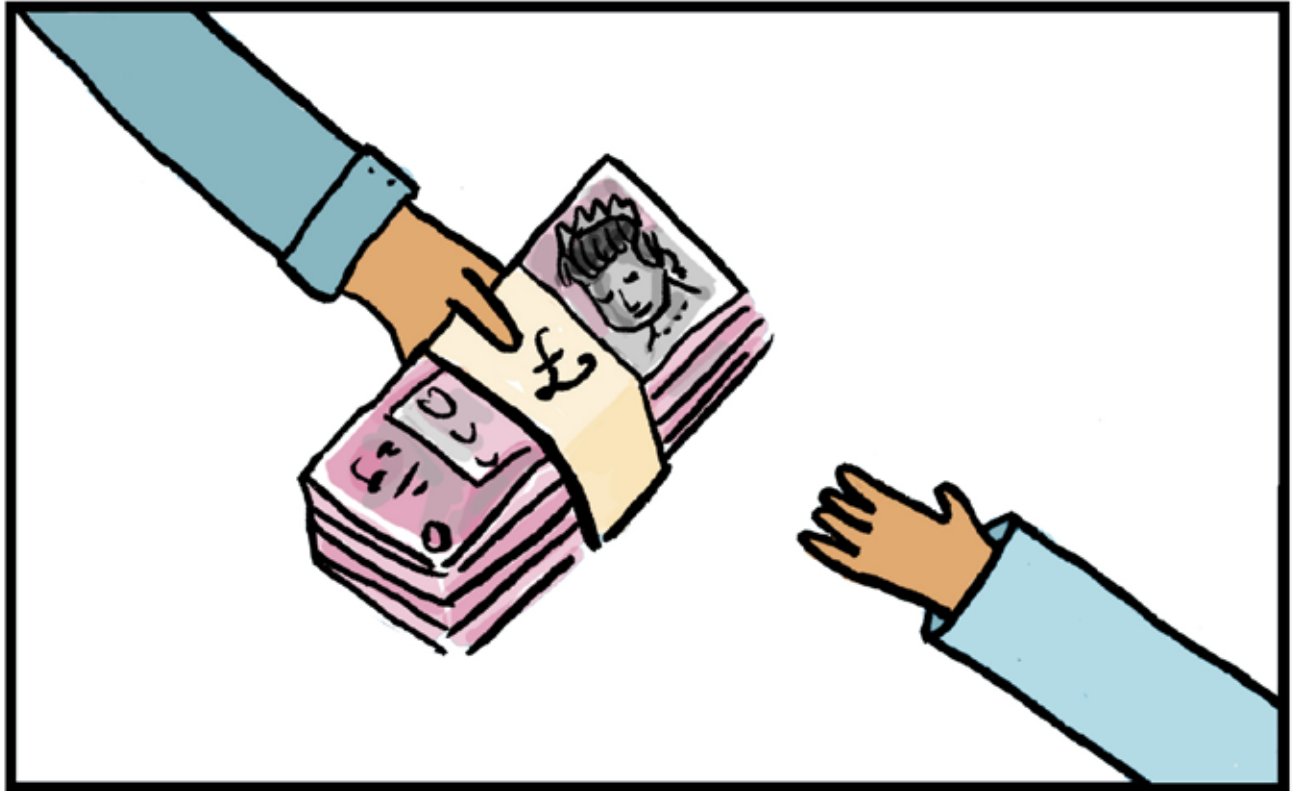
POSSIBLE OUTCOMES
AVAILABLE TO VICTIMS
OF TRAFFICKING IN THE UK



Asylum or leave to remain in the UK: Once someone has 'asylum' status then there is a right to stay and live in the UK. With a positive 'trafficking' decision there is also a possibility to stay in the UK with 'leave to remain'.



Removal: When someone is returned to their country of origin because they are not given asylum or leave to remain in the UK.



Compensation



Assistance to return home



Co-funded by the Prevention of
and Fight against Crime Programme
of the European Union

**FOCUS ON
LABOUR
EXPLOITATION**

labourexploitation.org